

1. Specification

LSP Duct

Model Name	Indoor Unit			AC026BNLDKG/EU	AC035BNLDKG/EU	
	Outdoor Unit			AC026RXADKG/EU	AC035RXADKG/EU	
Mode				-	Heat pump	
Performance	Capacity (Min/Std/Max)	Cooling	kW	0.80 / 2.60 / 3.80	0.85 / 3.50 / 4.30	
			Btu/h	2,730 / 8,870 / 12,970	2,900 / 11,940 / 14,670	
		Heating	kW	0.98 / 3.30 / 4.30	1.00 / 4.00 / 5.00	
			Btu/h	3,340 / 11,260 / 14,670	3,410 / 13,650 / 17,060	
Power	Power Input (Min/Std/Max)	Cooling	kW	0.19 / 0.68 / 1.20	0.20 / 1.12 / 1.40	
		Heating	kW	0.20 / 0.87 / 1.45	0.19 / 1.21 / 1.80	
	Current Input (Min/Std/Max)	Cooling	A	1.5 / 3.6 / 5.5	1.6 / 5.4 / 6.5	
		Heating	A	1.3 / 4.5 / 7.0	1.3 / 5.8 / 10.5	
	Current	MCA	A	11.7	11.7	
		MFA	A	12.9	12.9	
Efficiency	EER	Cooling	-	3.82	3.13	
	COP	Heating	-	3.79	3.31	
	SEER (Cooling Energy Grade)		-	6.2 (A++)	6.1 (A++)	
	SCOP (Heating Energy Grade)		-	4.0 (A+)	4.0 (A+)	
	Pdesignh		kW	2.0	2.0	
Piping Connections	Liquid Pipe	Type		Flare connection	Flare connection	
		Φ, mm (inch)		6.35 (1/4)	6.35 (1/4)	
	Gas Pipe	Type		Flare connection	Flare connection	
		Φ, mm (inch)		9.52 (3/8)	9.52 (3/8)	
	Heat Insulation		-	Both liquid and gas pipes	Both liquid and gas pipes	
	Piping length (ODU-IDU)	Standard	m		5	5
			m		20	20
m			15	15		
m			20	20		
Wiring connections	Communication	Min.	mm ²	0.75	0.75	
		Remark	-	F1, F2	F1, F2	
Refrigerant	Type		-	R32	R32	
	Factory Charging	kg		0.90	0.90	
		tCO ₂ e		0.61	0.61	
Power Supply				Ø, #, V, Hz	1,220-240,50	
Heat Exchanger	Type		-	F&T	F&T	
	Material	Fin	-	Al	Al	
		Tube	-	Cu	Cu	
Fin Treatment		-	Green Hydrophile	Green Hydrophile		
Fan	Type		-	Turbo	Turbo	
	Quantity		EA	1	1	
	Air Flow Rate	H/M/L	m ³ /min	8.0 / 6.5 / 5.5	10.0 / 8.5 / 7.0	
			l/s	133 / 108 / 92	167 / 142 / 117	
	External Static Pressure	Min/Std/Max	mmAq	0/2.5/4.0	0/2.5/4.0	
Pa			0/25/39	0/25/39		
Fan Motor	Type		-	BLDC	BLDC	
	Output		W x n	84 x 1	84 x 1	
Drain	Drain Pipe		Φ, mm	VP 25 (OD32, ID25)	VP 25 (OD32, ID25)	
Sound	Sound Pressure Level	H/M/L(Silent)	dB(A)		32 / 27 / 23	
			dB(A)		53	
External Dimension	Net Weight		kg	18.2	18.2	
	Shipping Weight		kg	21.5	21.5	
	Net Dimensions (WxHxD)		mm	900 x 199 x 440	900 x 199 x 440	
	Shipping Dimensions (WxHxD)		mm	1,151 x 280 x 544	1,151 x 280 x 544	
Casing	Material		-	GI Steel plate	GI Steel plate	

1. Specification

LSP Duct

	Model Name	Indoor Unit		AC026BNLDKG/EU	AC035BNLDKG/EU	
		Outdoor Unit		AC026RXADKG/EU	AC035RXADKG/EU	
Indoor Unit	Control System	Infrared remote control		-	AR-EH03E	
		Wired remote control		-	MWR-WE13N MWR-WG00*N	
	Drain Pump	Drain Pump		-	-	
	Additional Accessories	Drain Pump	External Model	-	-	-
			Internal Model	-	MDP-Z075SZED	MDP-Z075SZED
Max. lifting Height / Displacement		mm / Liter/h	750 / 24	750 / 24		
	Air Filter		-	Removalble / Washable	Removalble / Washable	
Outdoor Unit	Power Supply			Ø, #, V, Hz	1, 2, 220-240, 50	1, 2, 220-240, 50
	Heat Exchanger	Type		-	Fin & Tube	Fin & Tube
		Material	Fin	-	Al	Al
			Tube	-	Cu	Cu
		Fin Treatment		-	Anti-Corrosion	Anti-Corrosion
	Compressor	Model Name			UB9AK5090FER	UB9AK5090FER
		Type		-	Single BLDC	Single BLDC
		Output		kW	0.86	0.86
		Oil	Type	-	POE	POE
	Initial charge		cc	320	320	
	Fan	Type		-	Propeller	Propeller
		Discharge direction		-	Front	Front
		Quantity		EA	1	1
		Air Flow Rate		m ³ /min	30	30
	l/s			500	500	
	Fan Motor	Type		-	BLDC Motor	BLDC Motor
		Output		W x n	40 x 1	40 x 1
	Sound	Sound Pressure Level	Cooling	dB(A)	46	48
			Heating	dB(A)	47	48
		Sound Power Level		dB(A)	59	61
	External Dimension	Net Weight		kg	32.5	32.5
		Shipping Weight		kg	35.5	35.5
		Net Dimensions (WxHxD)		mm	790 x 548 x 285	790 x 548 x 285
Shipping Dimensions (WxHxD)		mm	913 x 622 x 371	913 x 622 x 371		
Casing	Material	Body	-	EGI Steel Plate	EGI Steel Plate	
	Operating Temp. Range		°C	-15 ~ 46	-15 ~ 46	
	Heating		°C	-20 ~ 24	-20 ~ 24	

NOTE

- Specification may be subject to change without prior notice.
- 1) Performances are based on the following test conditions.
 - Cooling : Indoor temperature 27°C DB, 19°C WB, Outdoor temperature 35°C DB, 24°C WB
 - Heating : Indoor temperature 20°C DB, 15°C WB, Outdoor temperature 7°C DB, 6°C WB
 - Equivalent refrigerant pipe length 5m, Level differences 0m
- 2) Select wire size based on the value of MCA
- 3) Sound pressure level is obtained in an anechoic room.
 - Sound pressure level is a relative value, depending on the distance and acoustic environment.
 - Sound pressure level may differ depending on operation condition.
 - dBA = A-weighted sound pressure level
 - Reference acoustic pressure 0 dB = 20µPa
- 4) Sound power level is an absolute value that a sound source generates.
 - dBA = A-weighted sound power level
 - Reference power : 1pW
 - Measured according to ISO 3741
- 5) These products contain R32(GWP=675) which is fluorinated greenhouse gas.
- 6) 'MWR-WG00*N' is new wired remote control type(Graphic).
If you need the latest control system information, please refer to SAC control TDB.

1. Specification

LSP Duct

Model Name	Indoor Unit			AC052BNLDKG/EU	AC071BNLDKG/EU	
	Outdoor Unit			AC052RXADKG/EU	AC071RXADKG/EU	
Mode				-	Heat pump	
Performance	Capacity (Min/Std/Max)	Cooling	kW	1.20 / 5.00 / 6.50	1.50 / 7.10 / 8.70	
			Btu/h	4,090 / 17,060 / 22,180	5,120 / 24,230 / 29,680	
		Heating	kW	1.10 / 6.00 / 7.20	1.90 / 8.00 / 9.00	
			Btu/h	3,750 / 20,470 / 24,570	6,480 / 27,300 / 30,710	
Power	Power Input (Min/Std/Max)	Cooling	kW	0.35 / 1.69 / 2.20	0.35 / 2.38 / 3.60	
		Heating	kW	0.26 / 1.74 / 2.70	0.35 / 2.38 / 3.95	
	Current Input (Min/Std/Max)	Cooling	A	2.1 / 7.7 / 10.0	2.0 / 10.5 / 16.0	
		Heating	A	1.7 / 7.8 / 12.0	2.0 / 10.4 / 17.0	
	Current	MCA	A	18.2	18.2	
		MFA	A	20.6	20.6	
Efficiency	EER	Cooling	-	2.96	2.98	
	COP	Heating	-	3.45	3.36	
	SEER (Cooling Energy Grade)			-	6.1 (A++)	6.0 (A+)
	SCOP (Heating Energy Grade)			-	4.0 (A+)	3.9 (A)
	Pdesignh			kW	2.4	3.7
	Piping Connections	Liquid Pipe	Type		Flare connection	Flare connection
Φ, mm (inch)			6.35 (1/4)	6.35 (1/4)		
Gas Pipe		Type		Flare connection	Flare connection	
		Φ, mm (inch)		12.7 (1/2)	15.88 (5/8)	
Heat Insulation			-	Both liquid and gas pipes	Both liquid and gas pipes	
Piping length (ODU-IDU)		Standard	m		5	5
			m		30	50
			m		20	30
	m		10	15		
Wiring connections	Communication	Min.	mm ²	0.75	0.75	
		Remark	-	F1, F2	F1, F2	
Refrigerant	Type			-	R32	R32
	Factory Charging			kg	1.20	1.70
				tCO ₂ e	0.81	1.15
Power Supply				Ø, #, V, Hz	1,220-240,50	1,220-240,50
Heat Exchanger	Type		-	F&T	F&T	
	Material	Fin	-	Al	Al	
		Tube	-	Cu	Cu	
Fin Treatment			-	Green Hydrophile	Green Hydrophile	
Fan	Type		-	Turbo	Turbo	
	Quantity		EA	1	1	
	Air Flow Rate	H/M/L	m ³ /min	16.0 / 13.5 / 11.0	19.2 / 16.5 / 13.5	
			l/s	267 / 225 / 183	320 / 275 / 225	
	External Static Pressure	Min/Std/Max	mmAq	0/3.0/4.0	0/3.0/4.0	
Pa			0/29/39	0/29/39		
Fan Motor	Type			-	BLDC	BLDC
	Output			W x n	84 x 1	84 x 1
Drain	Drain Pipe			Φ, mm	VP 25 (OD32, ID25)	VP 25 (OD32, ID25)
Sound	Sound Pressure Level	H/M/L/(Silent)	dB(A)		35 / 32 / 29	38 / 33 / 28
			dB(A)		55	59
External Dimension	Net Weight			kg	22.1	22.1
	Shipping Weight			kg	25.1	25.1
	Net Dimensions (WxHxD)			mm	1,100 x 199 x 440	1,100 x 199 x 440
	Shipping Dimensions (WxHxD)			mm	1,351 x 280 x 544	1,351 x 280 x 544
Casing	Material			-	GI Steel plate	GI Steel plate

1. Specification

LSP Duct

	Model Name	Indoor Unit		AC052BNLDKG/EU	AC071BNLDKG/EU	
		Outdoor Unit		AC052RXADKG/EU	AC071RXADKG/EU	
Indoor Unit	Control System	Infrared remote control		-	AR-EH03E	
		Wired remote control		-	MWR-WE13N MWR-WG00*N	
	Drain Pump	Drain Pump		-	-	
	Additional Accessories	Drain Pump	External Model	-	-	-
			Internal Model	-	MDP-Z075SZED	MDP-Z075SZED
Max. lifting Height / Displacement		mm / Liter/h	750 / 24	750 / 24		
	Air Filter		-	Removalble / Washable	Removalble / Washable	
Outdoor Unit	Power Supply			Ø, #, V, Hz	1, 2, 220-240, 50	1, 2, 220-240, 50
	Heat Exchanger	Type		-	Fin & Tube	Fin & Tube
		Material	Fin	-	Al	Al
			Tube	-	Cu	Cu
		Fin Treatment		-	Anti-Corrosion	Anti-Corrosion
	Compressor	Model Name			UB9TK3150FE4	UB4TN8200FE4
		Type		-	Twin BLDC	Twin BLDC
		Output		kW	1.51	1.89
		Oil	Type	-	POE	POE
	Initial charge		cc	500	650	
	Fan	Type		-	Propeller	Propeller
		Discharge direction		-	Front	Front
		Quantity		EA	1	1
		Air Flow Rate		m ³ /min	40	51
	l/s			667	850	
	Fan Motor	Type		-	BLDC Motor	BLDC Motor
		Output		W x n	125 x 1	125 x 1
	Sound	Sound Pressure Level	Cooling	dB(A)	48	49
			Heating	dB(A)	48	51
		Sound Power Level		dB(A)	62	65
	External Dimension	Net Weight		kg	43.0	51.0
		Shipping Weight		kg	46.5	55.0
		Net Dimensions (WxHxD)		mm	880 x 638 x 310	880 x 798 x 310
		Shipping Dimensions (WxHxD)		mm	1,023 x 742 x 413	1,023 x 896 x 413
	Casing	Material	Body	-	EGI Steel Plate	EGI Steel Plate
		Operating Temp. Range		°C	-15 ~ 50	-15 ~ 50
		Heating		°C	-20 ~ 24	-20 ~ 24

NOTE

- Specification may be subject to change without prior notice.
- 1) Performances are based on the following test conditions.
 - Cooling : Indoor temperature 27°C DB, 19°C WB, Outdoor temperature 35°C DB, 24°C WB
 - Heating : Indoor temperature 20°C DB, 15°C WB, Outdoor temperature 7°C DB, 6°C WB
 - Equivalent refrigerant pipe length 5m, Level differences 0m
- 2) Select wire size based on the value of MCA
- 3) Sound pressure level is obtained in an anechoic room.
 - Sound pressure level is a relative value, depending on the distance and acoustic environment.
 - Sound pressure level may differ depending on operation condition.
 - dBA = A-weighted sound pressure level
 - Reference acoustic pressure 0 dB = 20uPa
- 4) Sound power level is an absolute value that a sound source generates.
 - dBA = A-weighted sound power level
 - Reference power : 1pW
 - Measured according to ISO 3741
- 5) These products contain R32(GWP=675) which is fluorinated greenhouse gas.
- 6) 'MWR-WG00*N' is new wired remote control type(Graphic).
If you need the latest control system information, please refer to SAC control TDB.

2. Summary Table

LSP Duct

Performance Characteristics

Model Code	Net Weight (kg)	Capacity			Fan Speed	Airflow (Cooling/Heating) (CMM)	Sound Pressure Level (dBA)	Sound Power Level (dBA)
			Cooling (kW)	Heating (kW)				
AC026BNLDKG/EU	18.2	Max.	3.8	4.3	High	8.0 / 8.0	32	53
		Std.	2.6	3.3	Mid	6.5 / 6.5	27	-
		Min.	0.8	0.98	Low	5.5 / 5.5	23	-
AC035BNLDKG/EU	18.2	Max.	4.3	5.0	High	10.0 / 10.0	33	53
		Std.	3.5	4.0	Mid	8.5 / 8.5	30	-
		Min.	0.85	1.0	Low	7.0 / 7.0	27	-
AC052BNLDKG/EU	22.1	Max.	6.5	7.2	High	16.0 / 16.0	35	55
		Std.	5.0	6.0	Mid	13.5 / 13.5	32	-
		Min.	1.2	1.1	Low	11.0 / 11.0	29	-
AC071BNLDKG/EU	22.1	Max.	8.7	9.0	High	19.2 / 19.2	38	59
		Std.	7.1	8.0	Mid	16.5 / 16.5	33	-
		Min.	1.5	1.9	Low	13.5 / 13.5	28	-

NOTE

- Sound data is based on cooling operation.

Electric Characteristics

Model		Outdoor Unit				Input Current (Amperes)				Power Supply	
Indoor Unit	Outdoor Unit	Rated Hz	Voltage range			Outdoor Unit		Indoor Unit	Total	MCA(A)	MFA(A)
			Volts	Min.	Max.	Cooling	Heating				
AC026BNLDKG/EU	AC026RXADKG/EU	50	220 to 240	198	264	10.0	10.0	1.7	11.7	11.7	12.9
AC035BNLDKG/EU	AC035RXADKG/EU	50	220 to 240	198	264	10.0	10.0	1.7	11.7	11.7	12.9
AC052BNLDKG/EU	AC052RXADKG/EU	50	220 to 240	198	264	16.5	16.5	1.7	18.2	18.2	20.6
AC071BNLDKG/EU	AC071RXADKR/EU	50	220 to 240	198	264	16.5	16.5	1.7	18.2	18.2	20.6

NOTE

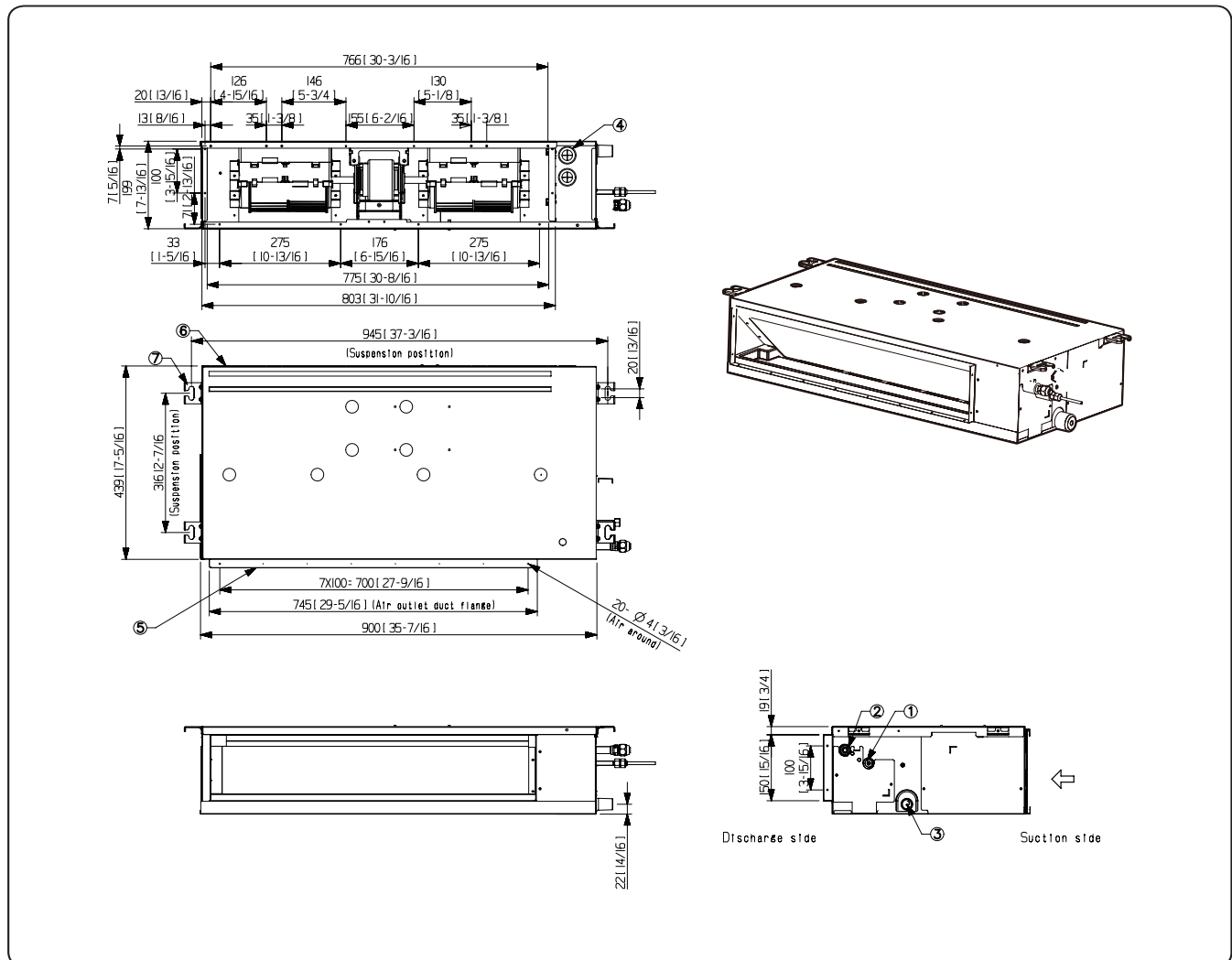
- MCA : Minimum circuit amperes
- MFA : Maximum fuse amperes
- Select wire size based on the value of MCA

4. Dimensional Drawing

LSP Duct (Home Duct)

AC026/035BNLDKG/EU

Units : mm [inches]



No.	Name	Description
1	Refrigerant Liquid Pipe	Φ6.35 [1/4"] Flare Connection
2	Refrigerant Gas Pipe	Φ9.52 [3/8"] Flare Connection
3	Condensate Drain (Option)	VP25 (OD32, ID25)
4	Power supply & Communication wiring conduit	-
5	Supply Air Flange	-
6	Return Air Flange	-
7	Hook	-

1. Summary Table

Outdoor Units

Performance Characteristics

Capacity kW	Model Code	Net Size (WxHxD mm)	Net Weight (kg)	Airflow (CMM)	Sound Pressure Level (dBA)		Sound Power Level (dBA)
					Cooling	Heating	
2.6	AC026RXADKG/EU	790 x 548 x 285	32.5	29	46	47	59
3.5	AC035RXADKG/EU	790 x 548 x 285	32.5	30	48	48	61
5.2	AC052RXADKG/EU	880 x 638 x 310	43.0	40	48	48	62
7.1	AC071RXADKG/EU	880 x 798 x 310	51.0	51	49	51	65
10.0	AC100RXAD*G/EU	940 x 998 x 330	72.0	72	52	54	69
12.0	AC120RXAD*G/EU	940 x 998 x 330	77.0	72	54	56	70
13.4	AC140RXAD*G/EU	940 x 1,210 x 330	87.0	110	53	54	69

NOTE

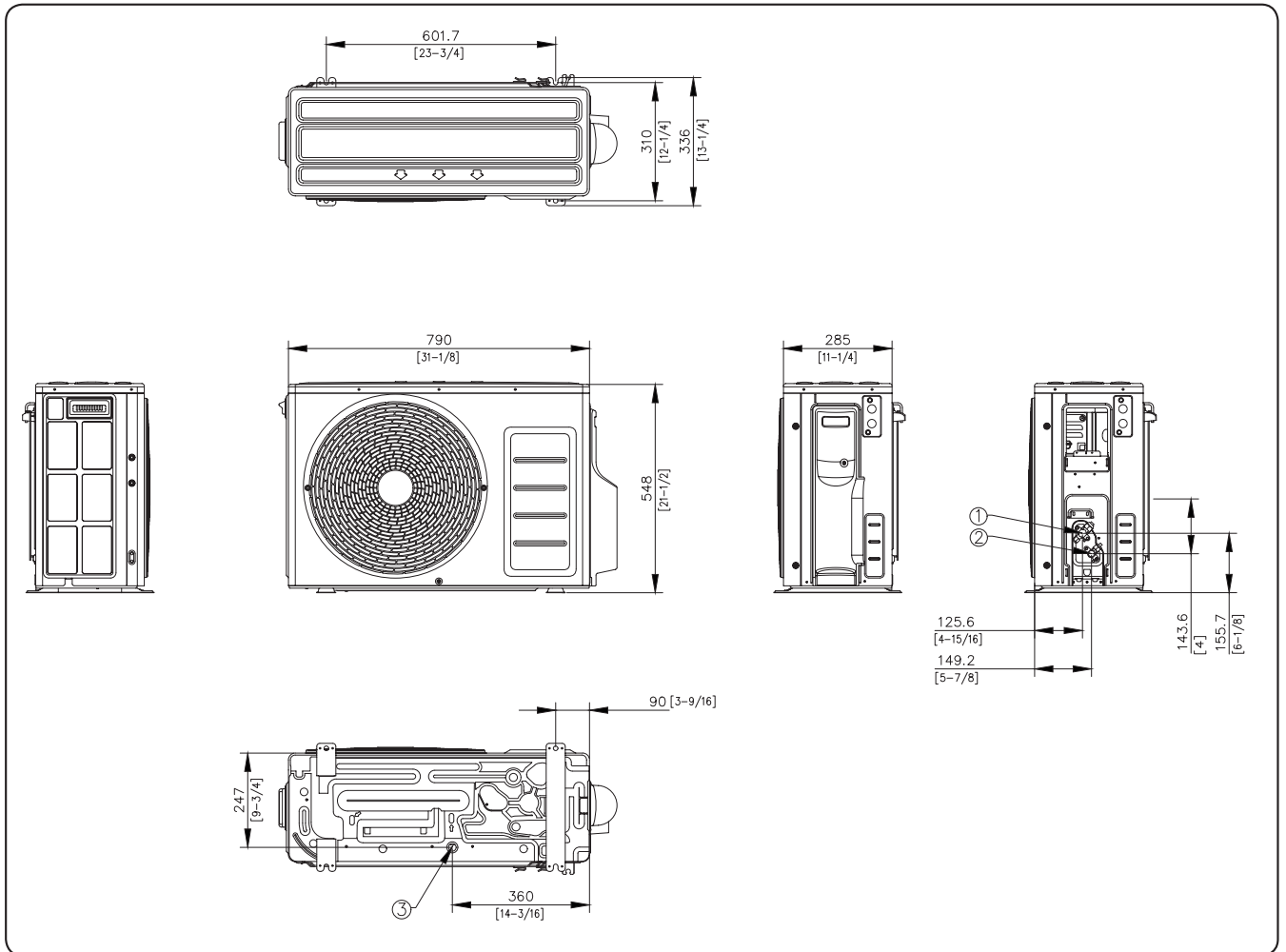
- Sound power level is based on cooling operation.

2. Dimensional Drawing

Outdoor Units

AC026/035RXADKG/EU

Units : mm [inches]



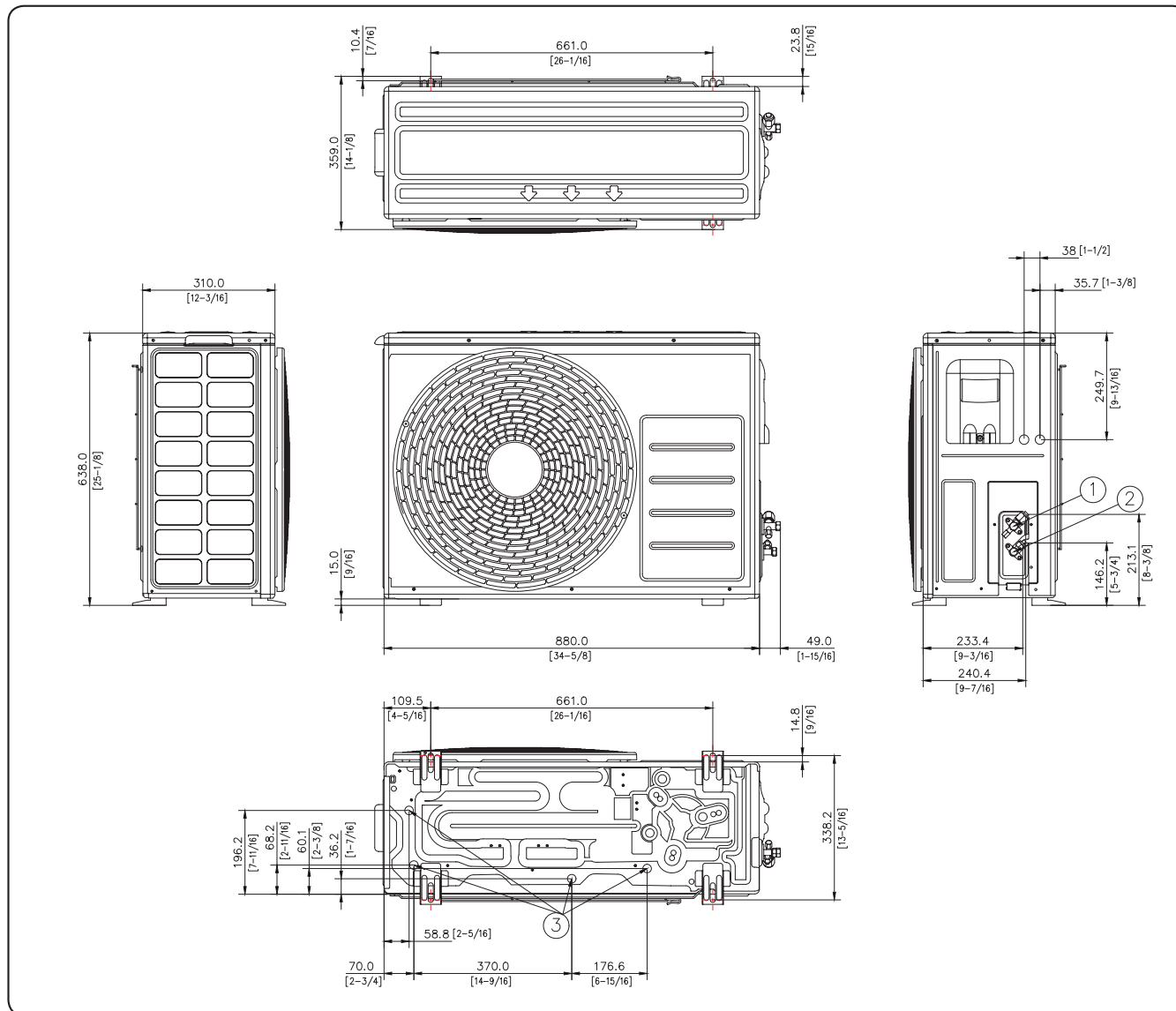
No.	Name	Description
1	Refrigerant gas pipe	Φ9.52(3/8)
2	Refrigerant liquid pipe	Φ6.35(1/4)
3	Drain Hole	Connection with the provided drain plug.

2. Dimensional Drawing

Outdoor Units

AC052RXADKG/EU

Units : mm [inches]



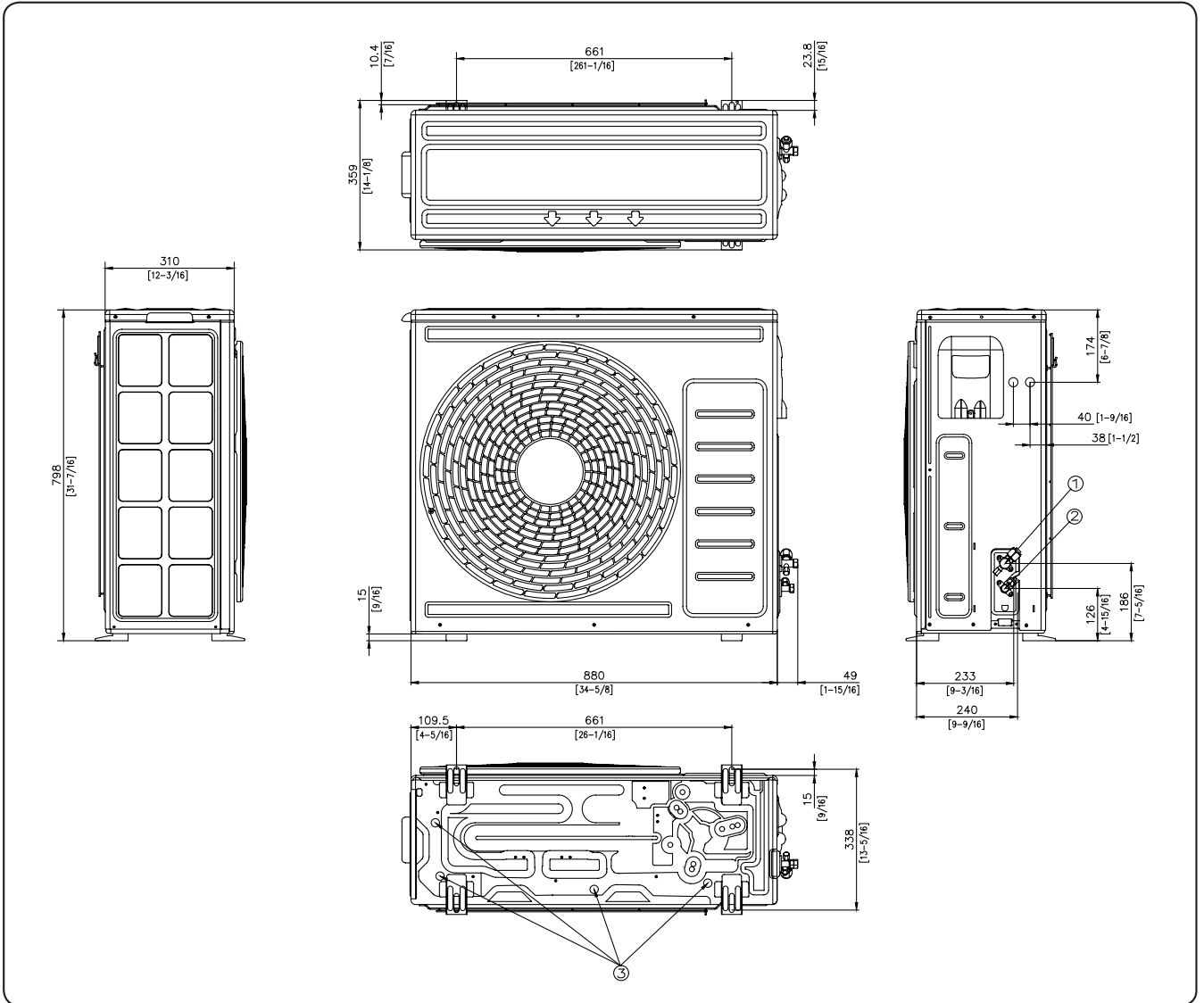
No.	Name	Description
1	Refrigerant gas pipe	Φ12.7(1/2)
2	Refrigerant liquid pipe	Φ6.35(1/4)
3	Drain Hole	Φ20

2. Dimensional Drawing

Outdoor Units

AC071RXADKG/EU

Units : mm [inches]



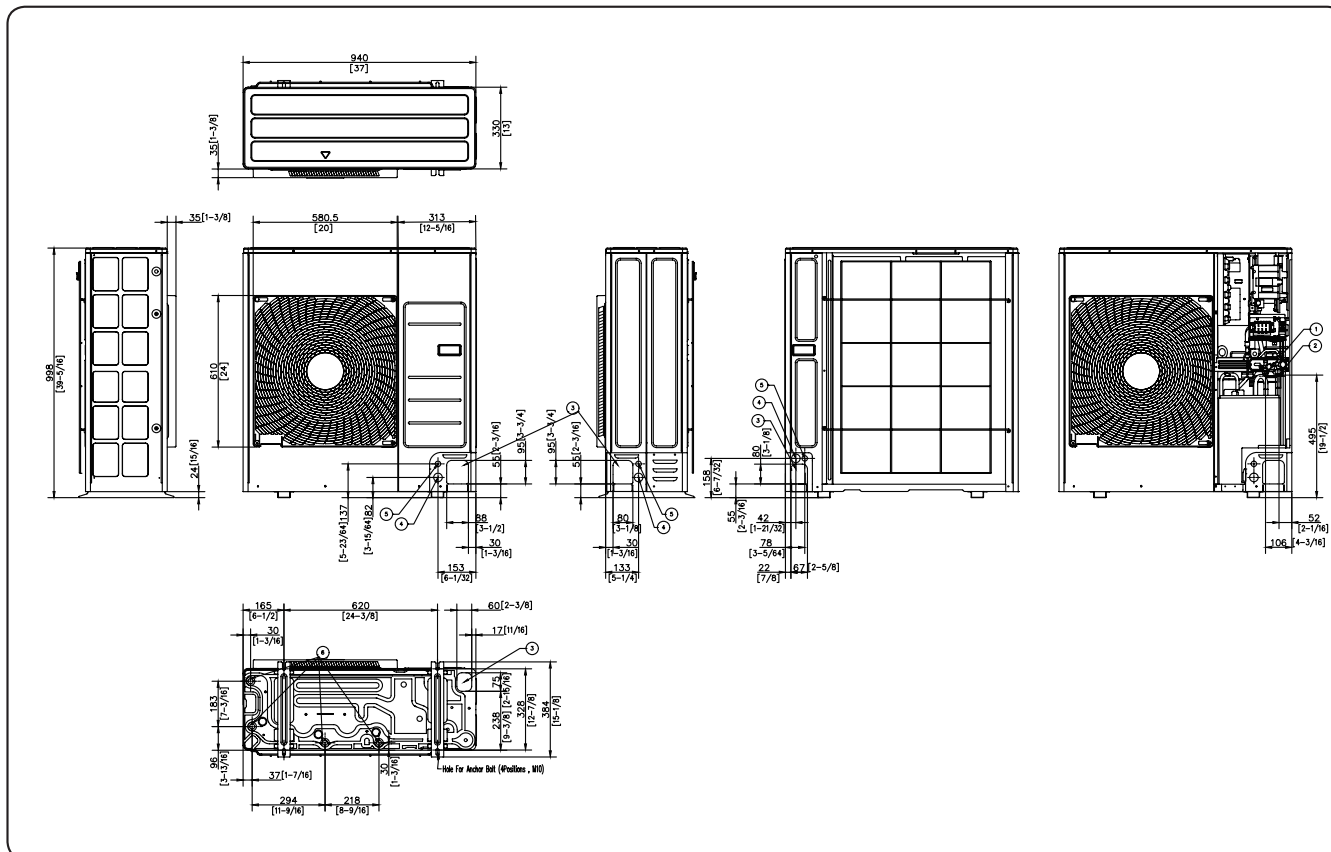
No.	Name	Description
1	Refrigerant gas pipe	Φ15.88(5/8)
2	Refrigerant liquid pipe	Φ6.35(1/4)
3	Drain Hole	Connection with the provided drain plug.

2. Dimensional Drawing

Outdoor Units

AC100/120RXAD*G/EU

Units : mm [inches]



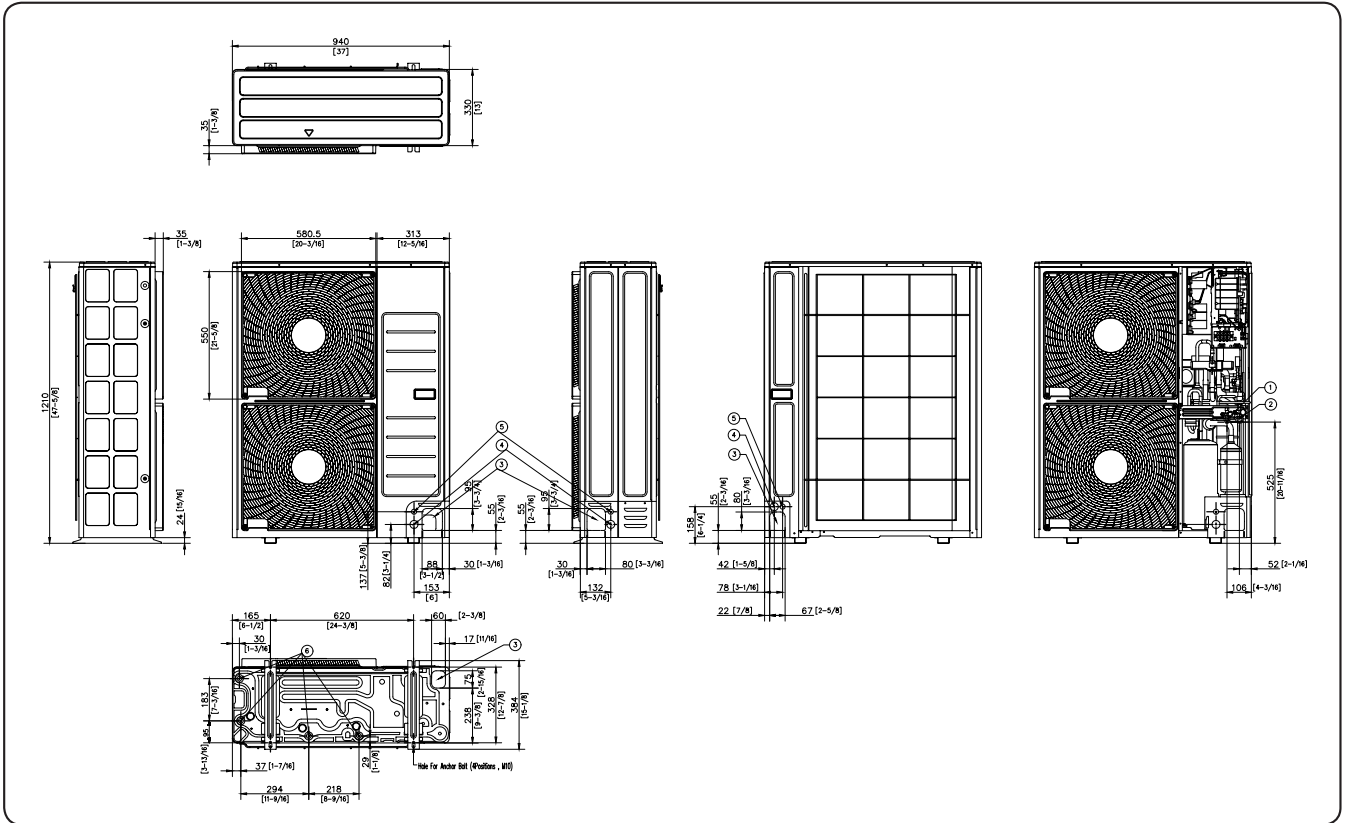
No.	Name	Description
1	Liquid pipe connection	Ø9.52 (3/8)
2	Gas pipe connection	Ø15.88 (5/8)
3	Piping intake knockout hole	Front / Side / Rear / Bottom
4	Power wiring conduit	Front / Side / Rear / Ø34 (1-3/8)
5	Communication wiring conduit	Front / Side / Rear / Ø22 (7/8)
6	Drain hole	Connect with the provided drain plug.

2. Dimensional Drawing

Outdoor Units

AC140RXAD*G/EU

Units : mm [inches]



No.	Name	Description
1	Liquid pipe connection	Ø9.52 (3/8)
2	Gas pipe connection	Ø15.88 (5/8)
3	Piping intake knockout hole	Front / Side / Rear / Bottom
4	Power wiring conduit	Front / Side / Rear / Ø34 (1-3/8)
5	Communication wiring conduit	Front / Side / Rear / Ø22 (7/8)
6	Drain hole	Connect with the provided drain plug.